

Bangles

B-168
5.5 DWT./1pc.



B-158
3.9 DWT./1pc.



B-169-2X
39.6 DWT./2pc. price



B-154
22.0 DWT./1pc.



B-170
22.0 DWT./1pc.



B-152
22.0 DWT./1pc.



B-563 (TOP ONLY)
3.4 DWT./1pc. / 11-03



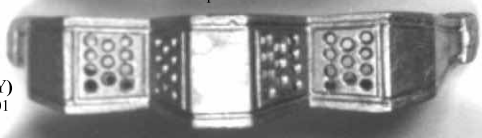
B-143 (TOP ONLY)
3.5 DWT./1pc. / 1-8 x 5 P.S., 4-7 x 4.5 P.S.



B-139 (TOP ONLY)
3.1 DWT./1pc.



B-141 (TOP ONLY)
5.7 DWT./1pc. / 9-6 x 4 OVALS



B-142 (TOP ONLY)
13.8 DWT./1pc. / 44.01

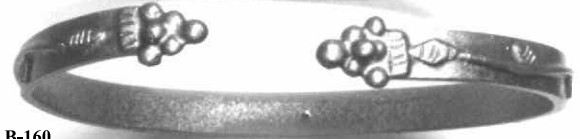


B-149-2X (TOP ONLY)
14.3 DWT./1pc.

B-157
4.1 DWT./1pc.



B-160
12.8 DWT./1pc.



B-122
11.6 DWT./1pc.



B-148-2X
31.9 DWT./2pc. price



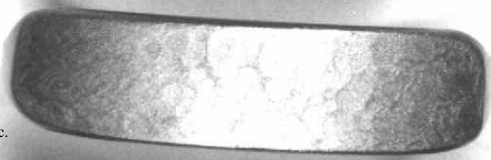
B-127-2X
19.8 DWT./2pc. price



B-126-2X
22.3 DWT./2pc. price



B-159
25.3 DWT./1pc.



B-151-2X
44.6 DWT./2pc. price



Bangles



B-252-2X
30.4 DWT./2pc. price
15 mm WIDE



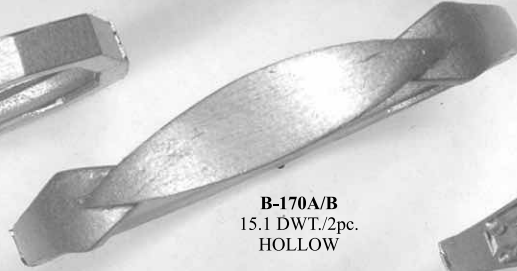
B-177
18.7 DWT./1pc.



B-173A/B
13.6 DWT./2pc.
HOLLOW



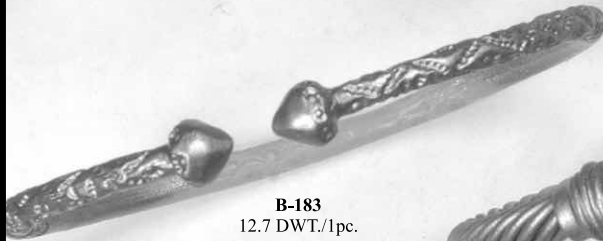
B-179A/B
13.8 DWT./2pc.
HOLLOW



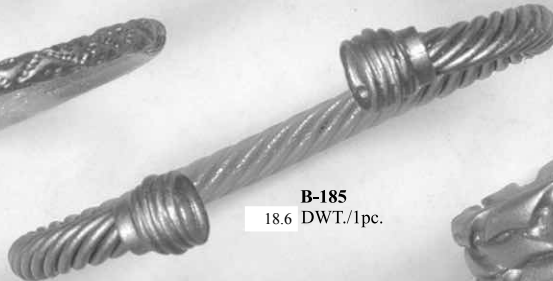
B-170A/B
15.1 DWT./2pc.
HOLLOW



B-174A/B
16.2 DWT./2pc.
HOLLOW



B-183
12.7 DWT./1pc.



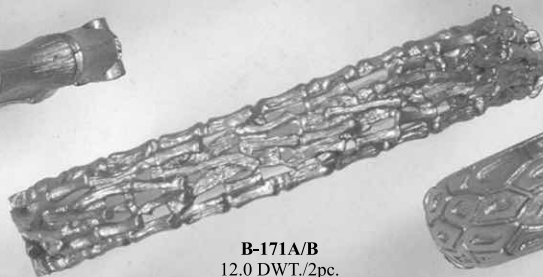
B-185
18.6 DWT./1pc.



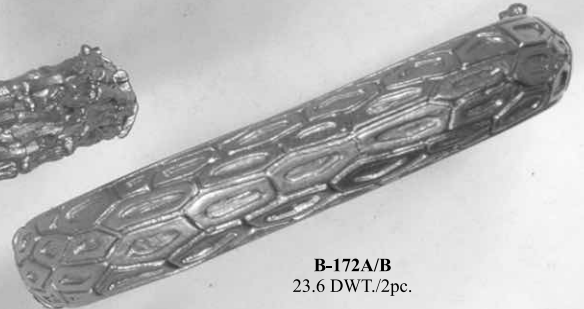
B-178-2X
26.6 DWT./2pc. price



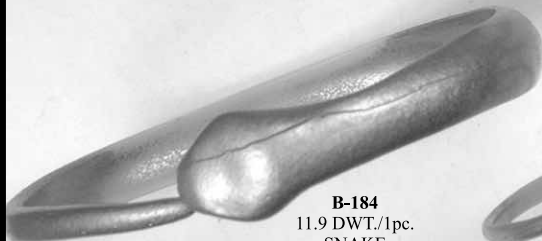
B-175A/B
19.4 DWT./2pc.



B-171A/B
12.0 DWT./2pc.



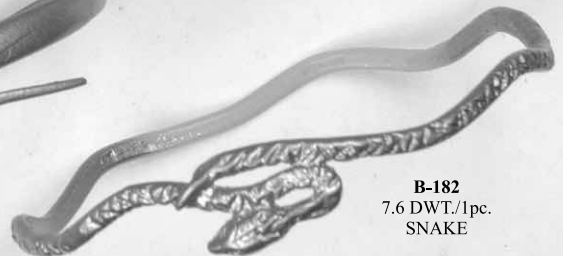
B-172A/B
23.6 DWT./2pc.



B-184
11.9 DWT./1pc.
SNAKE



B-186
5.3 DWT./1pc.
SNAKE



B-182
7.6 DWT./1pc.
SNAKE

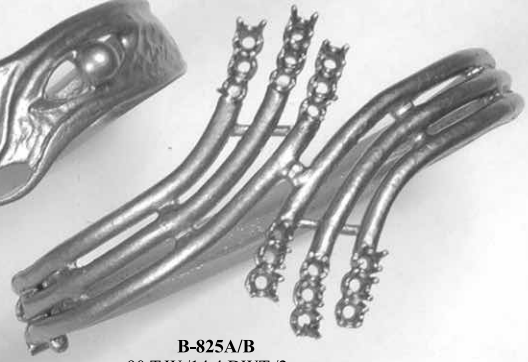
Bangles



B-180-2X
32.7 DWT./2pc. price
OWL



B-181
10.1 DWT./1pc.



B-825A/B
.90 T.W./14.4 DWT./2pc.
6-.06, 6-.05, 6-.04



B-193A/B/2T
.16 T.W./10.0 DWT./ 4pc.
16-.01



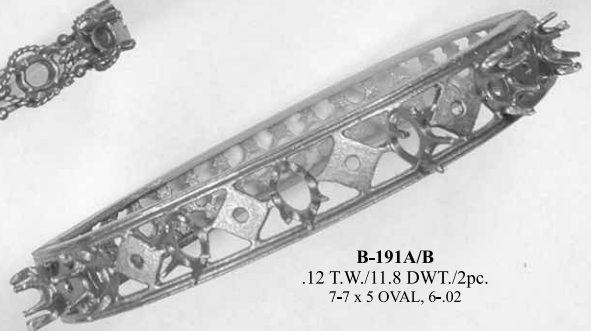
B-192A/B/T
.34 T.W./12.8 DWT./3pc.
6-.02, 12-.015, 4-.01



B-188A-1/B
9.4 DWT./2pc.
6-6 x 4 OVAL

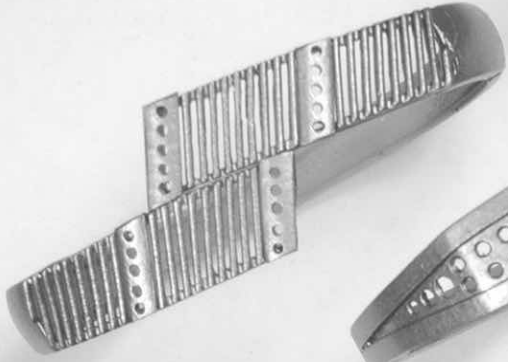


B-188A-2/B
10.8 DWT./2pc.
7-6 x 4 OVAL



B-191A/B
.12 T.W./11.8 DWT./2pc.
7-7 x 5 OVAL, 6-.02

Bangles



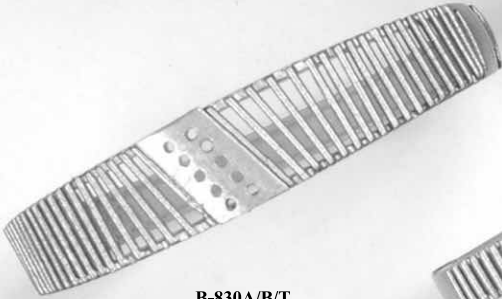
B-131A/B/4T
.10 T.W./13.4 DWT./6pc.
20-005



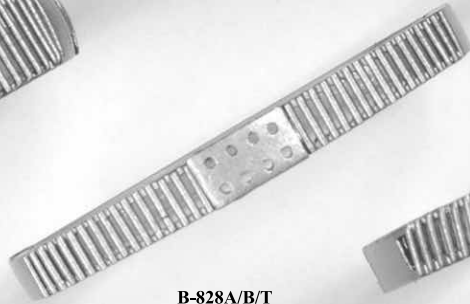
B-827A/B/T
18.9 DWT./3pc.



B-826A/B/E928
16.0 DWT./3pc.



B-830A/B/T
.10 T.W./12.7 DWT./3pc.
10-01



B-828A/B/T
.08 T.W./10.0 DWT./3pc.
8-01



B-829A/B/3T
.06 T.W./10.4 DWT./5pc.
6-01



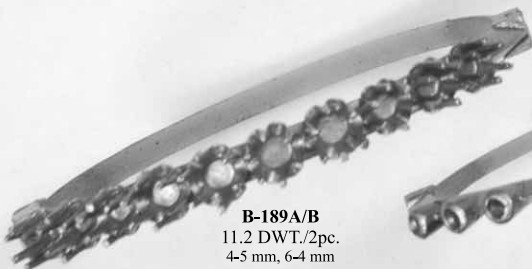
B-194A/B
2.00 CT. T.W./10.6 DWT./2pc.
23-085



B-195A/B
1.5 CT. T.W./9.9 DWT./2pc.
23-065



B-196A/B
.93 T.W./7.7 DWT./2pc.
31-03



B-189A/B
11.2 DWT./2pc.
4-5 mm, 6-4 mm



B-199A/B
.27 T.W./8.2 DWT./2pc.
9-03



B-197A/B
.77 T.W./8.9 DWT./2pc.
22-035